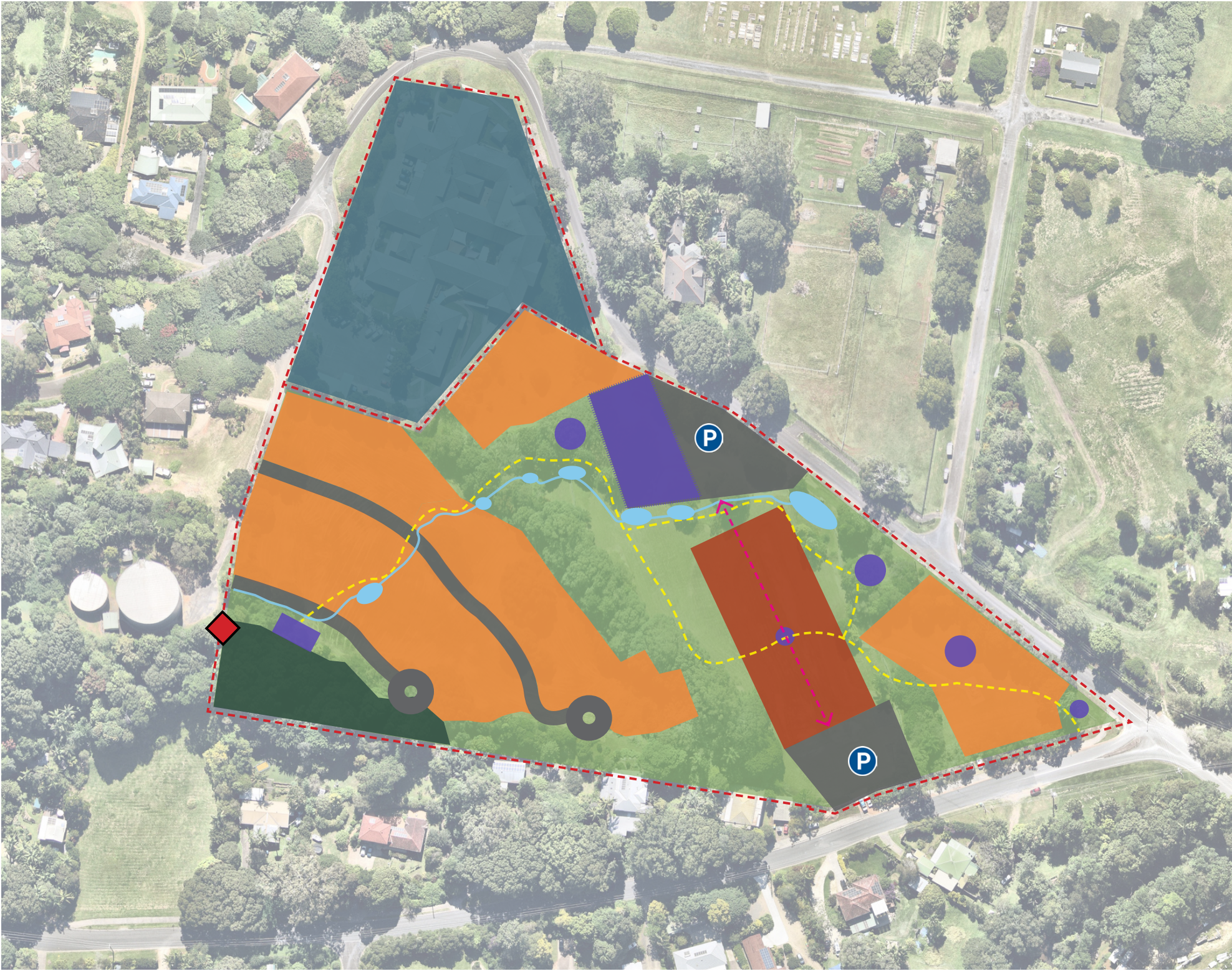


# Conceptual Design 1

## Enquiry by Design Process

Please note that this is a concept plan based on the outcomes of the Mullumbimby Hospital Enquiry by Design Process. Further detail about the land use and infrastructure provision will be analysed and tested by Council in the project's next stages.

- Legend:
- Hospital Site Allotment Boundaries
  - Residential (mixture of 2 - 3 stories, yield of approx. 150 - 200 dwellings)\*
  - Existing Aged Care Facility (retained)
  - Community facilities and amenities
  - Community facility above car parking
  - Mixed-use (commercial and residential)
  - Open space (including bushfire/ vegetation buffer and high value vegetation)
  - Stormwater movement and detention areas
  - Subtropical rainforest (conservation zone)
  - Main roads
  - Vehicle movement
  - Vehicle movement (underneath buildings)
  - Shared paths (walking and rolling)
  - Significant location (viewlines and cultural heritage)
  - Emergency access & pedestrian priority space



\*High value existing trees (remnant, high value native, hollow-bearing) to be retained within residential areas

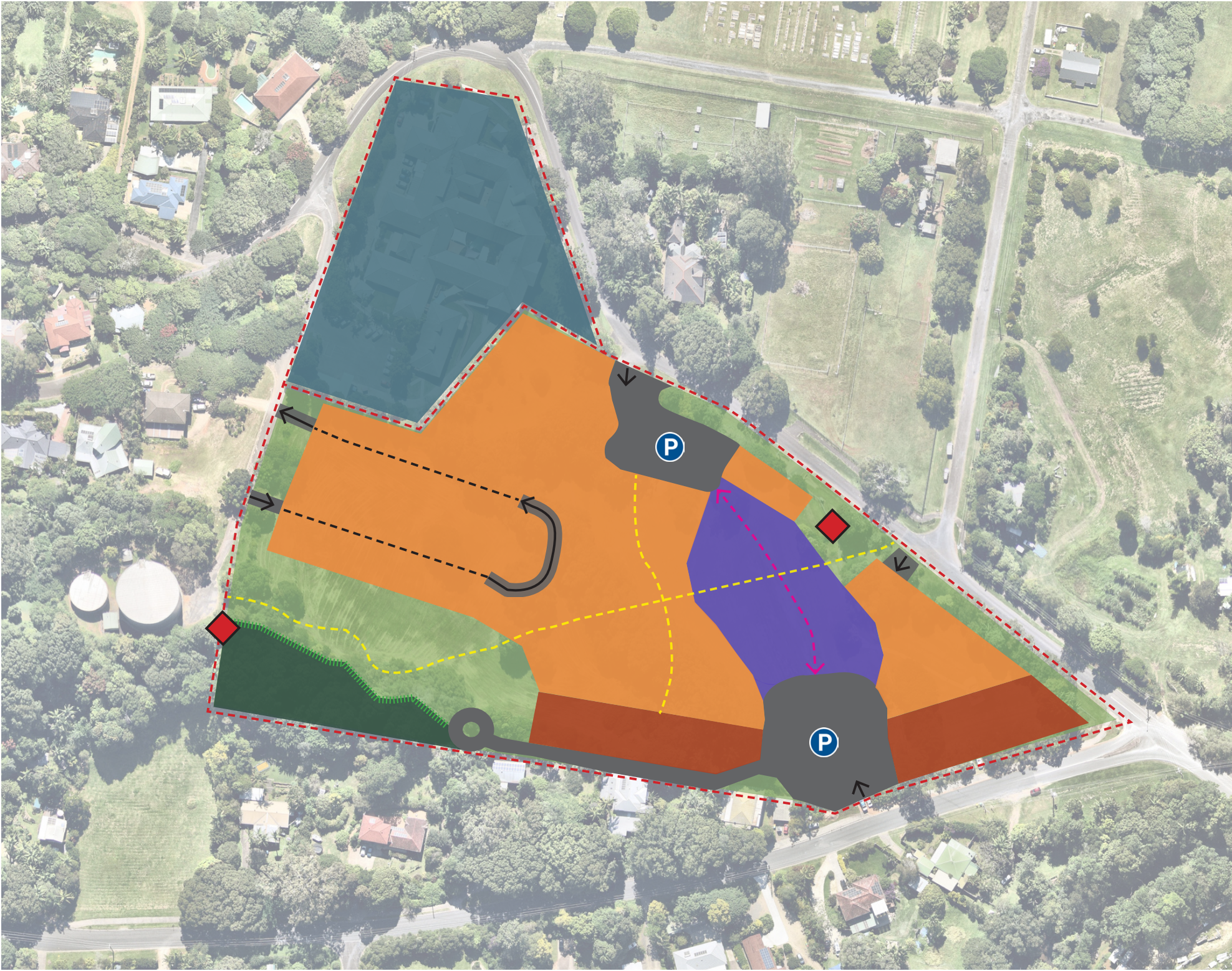


# Conceptual Design 2

## Enquiry by Design Process

Please note that this is a concept plan based on the outcomes of the Mullumbimby Hospital Enquiry by Design Process. Further detail about the land use and infrastructure provision will be analysed and tested by Council in the project's next stages.

- Legend:
- Hospital Site Allotment Boundaries
  - Residential (mixture of 2 - 3 stories, yield of approx. 250 - 300 dwellings)\*
  - Existing Aged Care Facility (retained)
  - Community facilities and amenities
  - Mixed-use (commercial and residential)
  - Open space (including bushfire/ vegetation buffer and high value vegetation)
  - Stormwater movement and detention areas
  - Subtropical rainforest (conservation zone)
  - Further investigations into extent of high value vegetation
  - Main roads
  - Vehicle movement
  - Vehicle movement (underneath buildings)
  - Shared paths (walking and rolling)
  - Significant location (viewlines and cultural heritage)
  - Emergency access & pedestrian priority space



\*High value existing trees (remnant, high value native, hollow-bearing) to be retained within residential areas



# Conceptual Design 3

## Enquiry by Design Process

Please note that this is a concept plan based on the outcomes of the Mullumbimby Hospital Enquiry by Design Process. Further detail about the land use and infrastructure provision will be analysed and tested by Council in the project's next stages.

- Legend:
- - - Hospital Site Allotment Boundaries
  - Residential (mixture of 1 - 3 stories, yield of approx. 150 - 200 dwellings)\*
  - Existing Aged Care Facility (retained)
  - Community facilities and amenities
  - Open space (including bushfire/ vegetation buffer and high value vegetation)
  - Stormwater movement and detention areas
  - Subtropical rainforest (conservation zone)
  - Main roads
  - Vehicle movement
  - - - Shared paths (walking and rolling)
  - ◆ Significant location (viewlines and cultural heritage)



\*High value existing trees (remnant, high value native, hollow-bearing) to be retained within residential areas